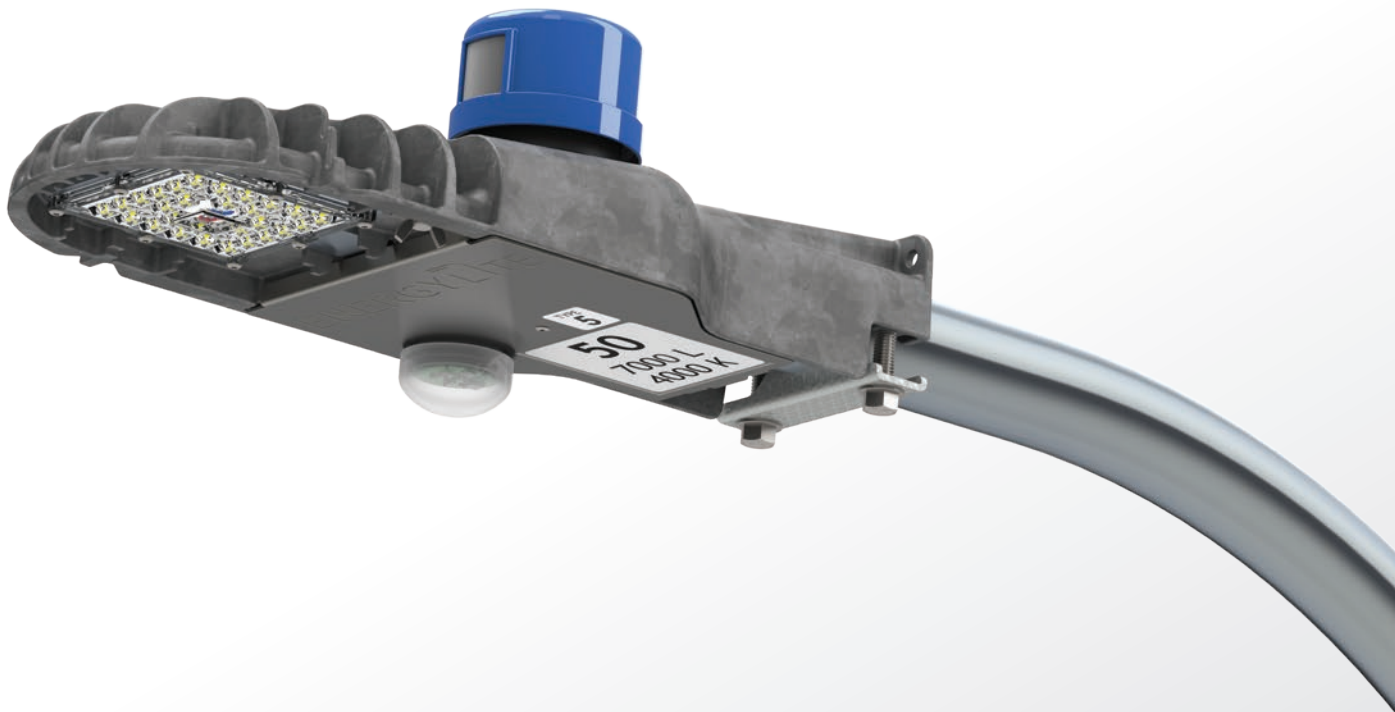


SecureLite3

SECURITY YOU CAN SEE



CREATED BY ENERGYLITE

ENERGYLITE introduces

SecureLite³

SL3

SecureLite™ offers the latest in dusk-to-dawn utility-grade lighting. EnergyLite's third-generation outdoor area and security luminaire has been redesigned from the ground up to meet the high performance, long life, easy maintenance and value the utility market demands. The SL3 is a 50-250 W metal halide fixture replacement and a 50-200 W high-pressure sodium fixture replacement; bundled in a 24-79 W up to 170 lm/W fixture. The SecureLite3 is a robust solution for general security and area lighting on residential streets, boat docks, loading platforms, access drives and rural pathways.

Ratings + Certifications

- cULus Listed for wet locations (E487976)
- DesignLights Consortium® (DLC®) Listed
- IDA Dark Sky Friendly ($\leq 3000\text{K}$)
- IP66-rated optical chamber
- 3G vibration rated (ANSI C136.31)
- Zhaga D4i listed (The only security fixture listed on the market!)
- Designed and manufactured in the U.S.A.



SecureLite³

Durable...Reliable...

Security you can see

Surge protection

10kV/5kA suppressor standard, with optional 20kV/10kA high-power suppressor.

Premium construction

Die-cast, low-copper aluminum alloy housing for optimal thermal performance and exceptional corrosion resistance.

IP66 optical chamber

Complete protection from dust, particles and all else Mother Nature can throw its way.

EnergyLite-designed optics

Best-in-class performance, delivering excellent IESNA distributions, with an acrylic lens to eliminate the risk of yellowing.

Receptacle options

- ANSI C136.41 3-pin
- ANSI C136.41 7-pin (for DALI-2 or 0-10 V dimming)
- Zhaga Book 18/ANSI C136.58 (for sensors/communication)
- Optional IR ambient light control

Toolless electrical access

- Corrosion-resistant stamped-aluminum access door designed with installers in mind
- Unimpeded input wire installation to terminal block
- High-visibility bubble level

Visual comfort and flexibility

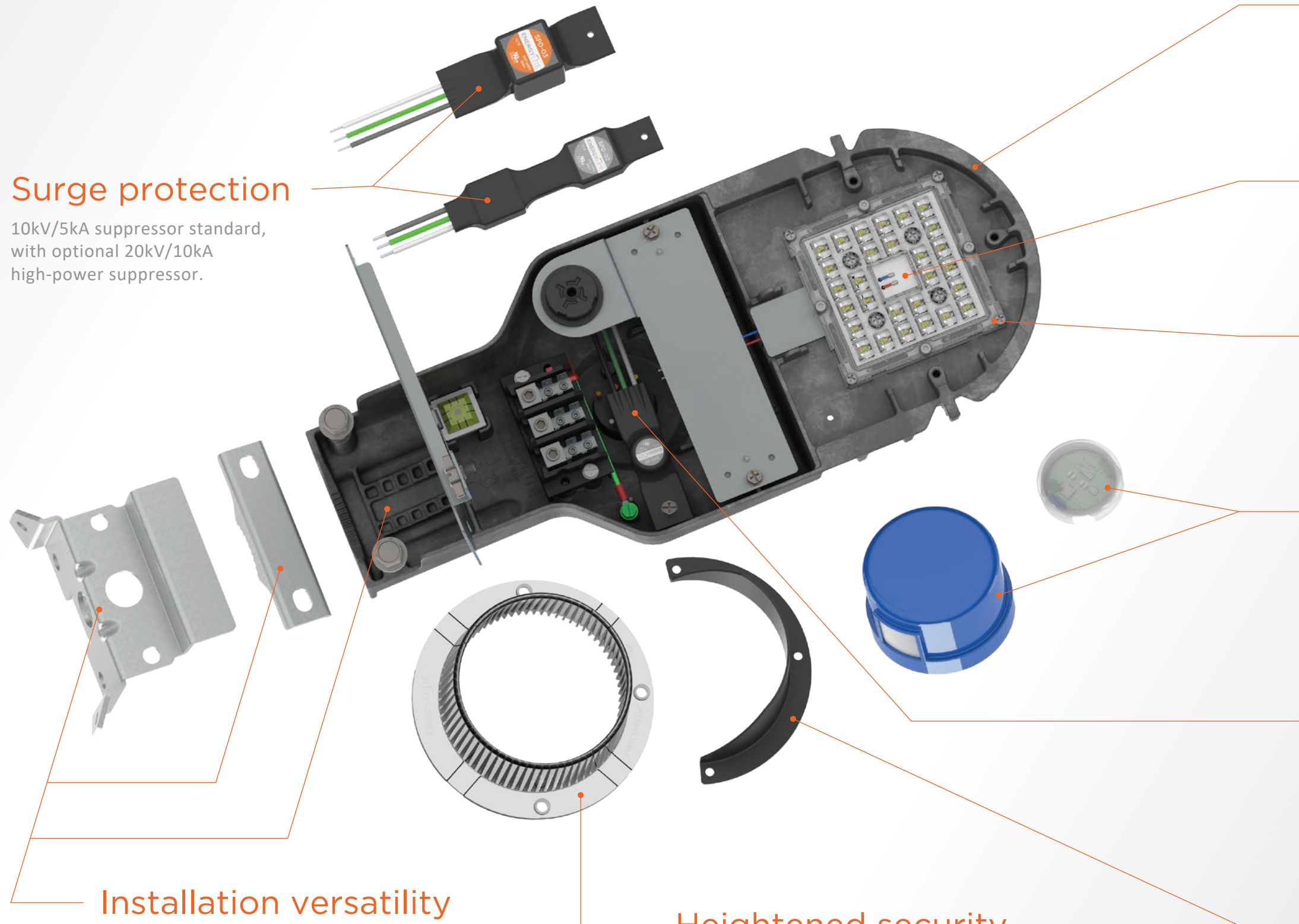
EnergyLite-designed field-installed glare shield option for applications in need of direction – to provide light where you want it, not where you don't.

Installation versatility

Mounts on 1¼" to 2" standard tenon with ±5° adjustments. Built-in features for direct wall mounting without need for tenon or optional wood pole adapter.

Heightened security

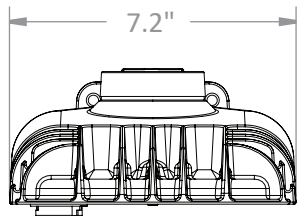
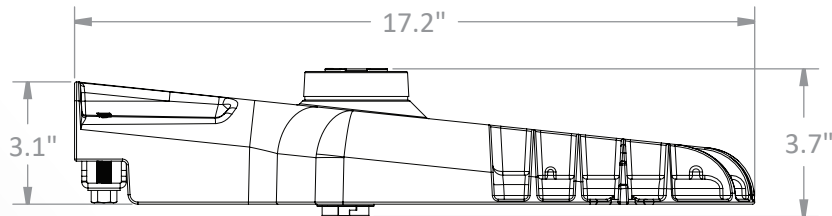
EnergyLite-designed short acrylic refractor option for increased fixture visibility. Compatible with existing NEMA drop refractors.



Light where you want it, not where you don't



EPA: 0.28 sq. ft.
Weight: 5.5 lbs.



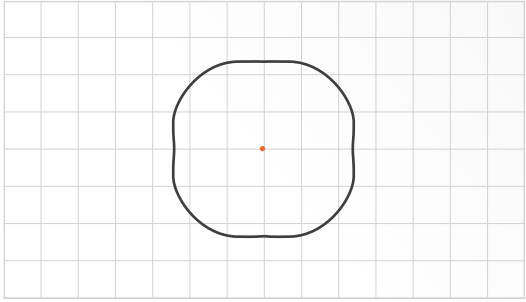
Performance Packages

Up to 170 lm/W

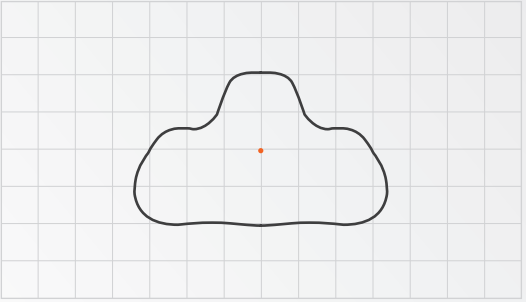
-  24 W; 3,000 lumens
-  29 W; 4,000 lumens
-  34 W; 5,000 lumens
-  42 W; 6,000 lumens
-  47 W; 7,000 lumens
-  56 W; 8,000 lumens
-  65 W; 9,000 lumens
-  78 W; 10,000 lumens

Distributions

Type V



Type III



Options + Accessories

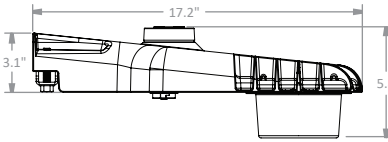
Glare Shield



Wood Pole Adapter

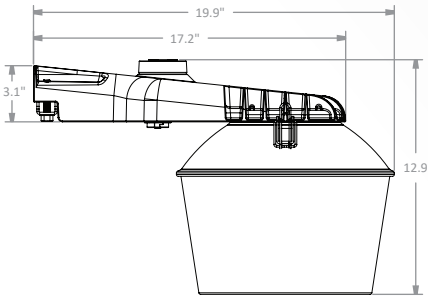


Short Acrylic Refractor



EPA: 0.35 sq. ft.

NEMA Drop Refractor



EPA: 0.94 sq. ft.

*Consult factory for wildlife friendly options.

SOLAIS

LIGHTING GROUP

Solais Lighting Group (SLG) is a fast-growing, technologically relevant, market-driven manufacturer. We push the innovation envelope to create LED products that replace traditional lighting technologies, with zero compromise to aesthetics and performance.

SLG's products provide quality lighting for our retail, hospitality, supermarket, museum, commercial and utility clients, which include the world's leading brands.

For additional information on Solais Lighting Group's Solais and EnergyLite brands, visit us at www.solais.com.

SOLAIS[®] + ENERGYLITE